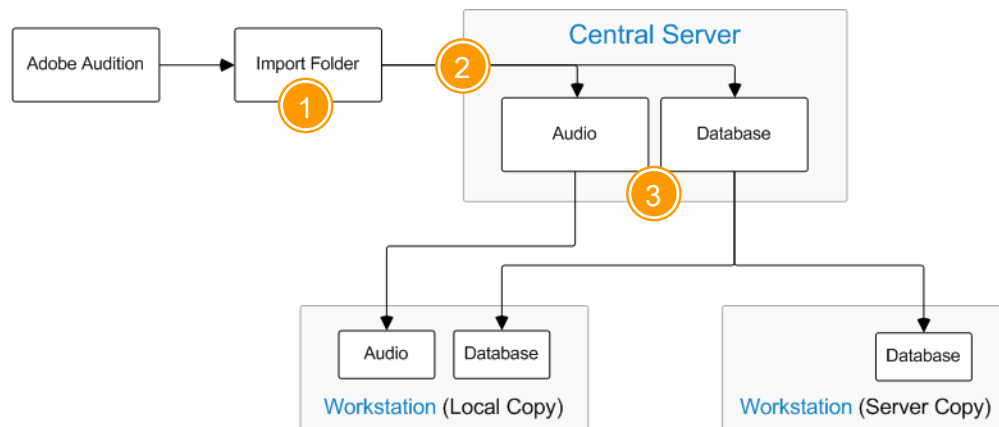


Interfacing with Adobe® Audition® 3

Adobe Audition 3 can be used to create and edit audio file for use with *WideOrbit Automation for Radio*. After completing your work on your audio in Audition and the file is saved, *WO Automation for Radio's Automatic Media Asset Importer (AMAI)* imports the audio into your Central Server for distribution to each workstation.

This document will go over installation of the *WO Automation for Radio* Adobe Audition Plug-in, setting up an import rule in AMAI and some basic Audition processes.



- 1 After completing all editing and metadata entry in Audition, the audio file is saved to an Import folder actively scanned by AMAI (Automatic Media Asset Importer).
- 2 AMAI imports the audio file, adding the audio to the Central Server audio library and adding the file's metadata to the Central Server database.
- 3 Central Server distributes the audio and metadata to all Workstations configured to receive the Media Asset. The audio file is stored in Workstation's local audio volume, while the associated metadata is added to Workstation's local database.

Before installing the Plug-in or setting up AMAI, make sure Audition is properly installed and activated.

For Adobe Audition training resources, check out the [Adobe web site](#) or the training disc that came with your copy of the software.

Installing the Adobe Audition Plug-in

You may need to remove your currently installed plug-in before installing the new version. To determine if you need to remove the previous version:

1. Close Adobe Audition.
2. Look for a file named **gra_audition_plugin.flt** in the main Adobe Audition 3.0 folder (usually `\Program Files\Adobe\Adobe Audition 3.0`).
 - If you see the **gra_audition_plugin.flt** file, delete this FLT and open Adobe Audition before proceeding with the installation of the new plug-in. [Opening Audition with no plug-in installed allows Audition to “forget” the old version of the plug-in.](#)
 - If you see only the **wo_automation_for_radio.flt** file, there is no need to delete the FLT before continuing.

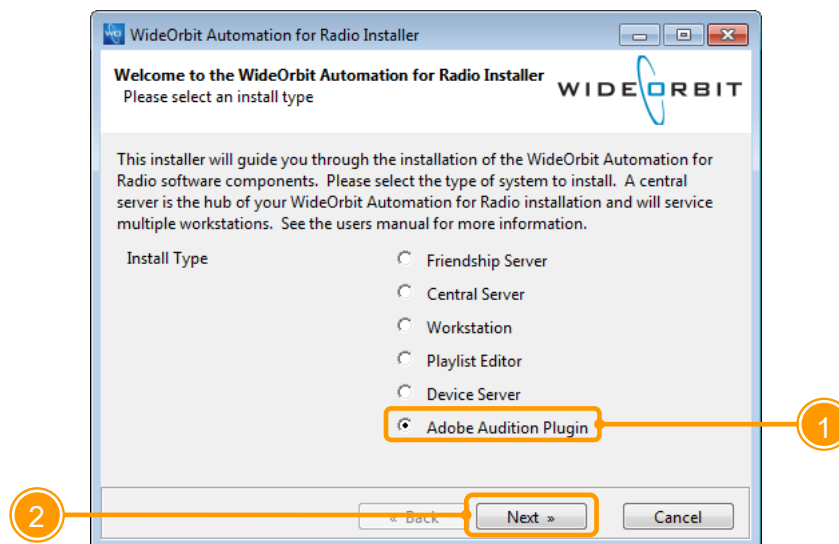
1

Run the **Installer** executable. The Installer name will reference the version of *WO Automation for Radio* being installed, for example `install-Version3.5(Build_20).exe`.

If you see a Windows security warning after running the installer, allow Windows to continue with the installation.

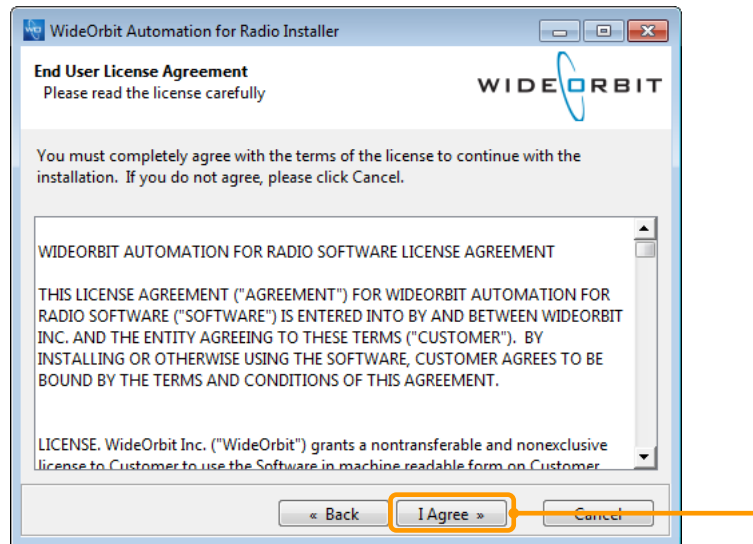
2

From the list of available **Install Types**, select **Adobe Audition Plugin** and *click Next* to continue.



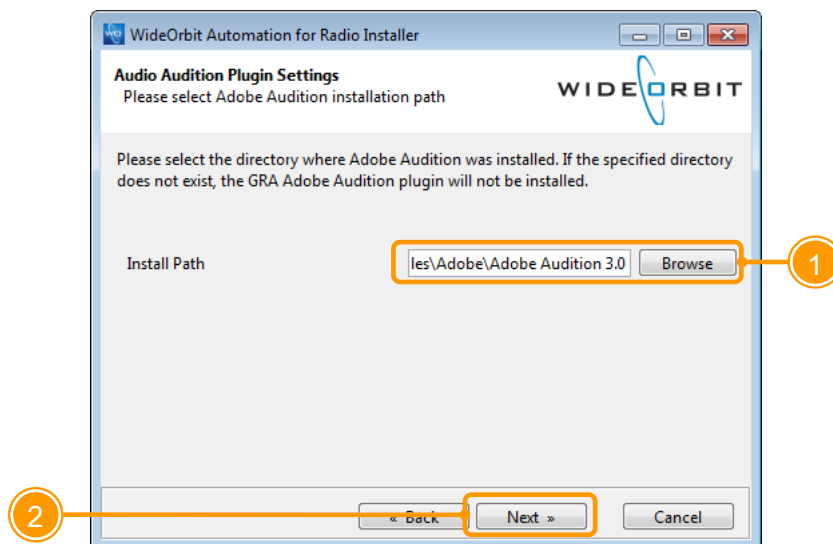
3

Click **I Agree** to accept the end user license agreement and continue with the installation.



4

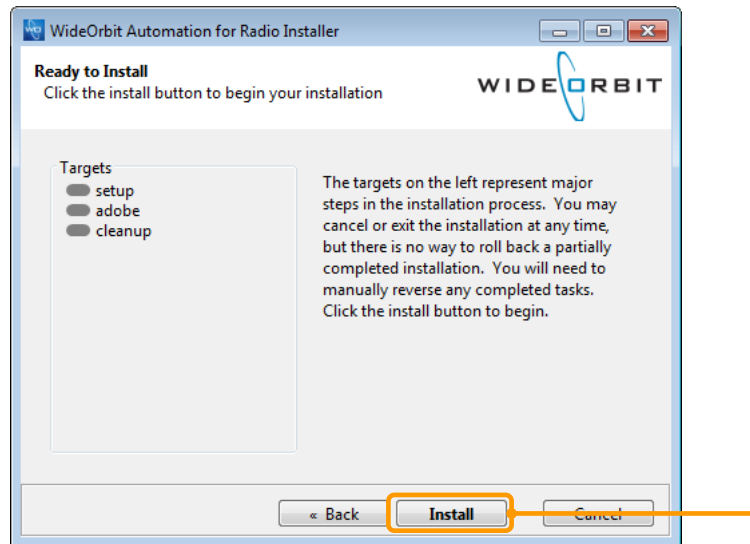
Type or browse to the **directory** where Adobe Audition is installed and **click Next** to continue.



This path typically will be C:\Program Files\Adobe\Adobe Audition 3.0. If the entered path does not exist, the plug-in will not be installed.

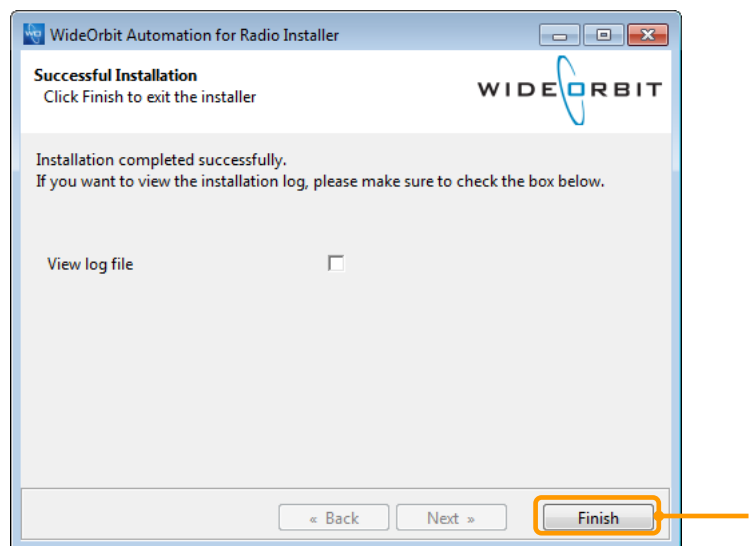
5

Click **Install** to continue.



6

Click **Finish** to complete the installation and close the installer.

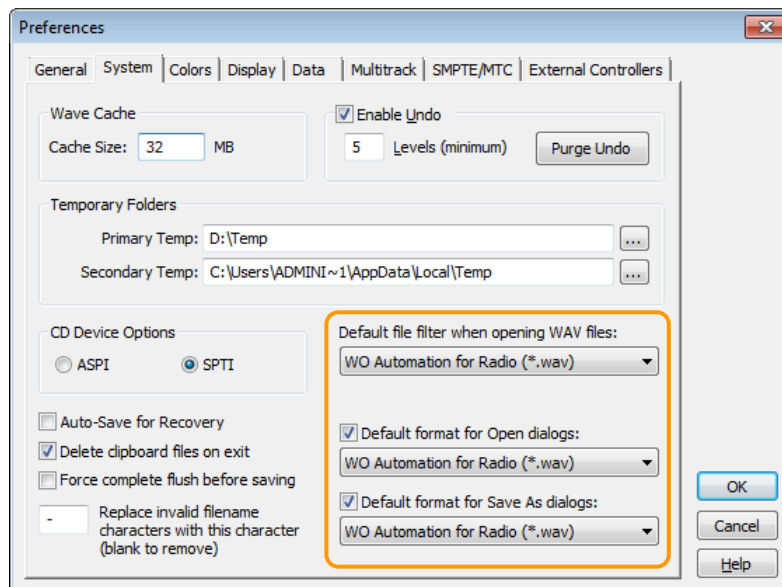


7

Open Adobe Audition.

8

Configure your Preferences. With Adobe Audition open, *press F4* to open the [Preferences](#) dialog. *Click* on the **System** tab.



Set the [Default File Filter](#) and [Default Format for Open/Save As](#) dialogs to **WO Automation for Radio.wav**. Once the preferences have been set, *click OK* to save your changes and close the Preferences window.

Interfacing with AMAI

AMAI scans local or remote directories for new files, processes and imports the file, and distributes the audio throughout your system. To configure AMAI:

1. Add directories. When saving your work in Audition, you will save to this folder. It can be local to the Audition computer or on the network.
2. Create a rule
3. Assign the rule to the directory

AMAI is configured through the Central Server Configuration Web UI. Click on the **Media Importer** link in the **Configuration** section of the left-hand menu.

Central Server Configuration Apps: [Audio Finder](#) [Rotators](#) [Reports](#) [Send Feedback](#) [Get Help](#)

Software
[Installer](#)
[UNC Launcher](#)

Inventory
[Import Content](#)
[Asset Fields](#)

Configuration
[Radio Stations](#)
[Categories](#)
[Workstations](#)
[Audio Ducking](#)
[Media Importer](#)
[WO Traffic](#)
[MusicMaster](#)
[User Profiles](#)
[Notifications](#)
[Distribution](#)
[Devices](#)
[Now Playing](#)

System
[Adobe Audition](#)
[Email Server](#)
[Friendships](#)

Welcome

Welcome to WideOrbit Automation for Radio Setup.

This web application is used to configure your radio automation system. Use the links below or on the left to select the functionality you wish to configure.

Radio Stations

Hot_104.5

Categories

080	COM	HOT	JIN
NAB	NB1	NB2	OLD
SFX	SHW	TST	VTK

Workstations

Hot 104.5 On Air

Build Version 3.0 (Build_14), ©2008-2011 WideOrbit

Adding Local Scan Directories

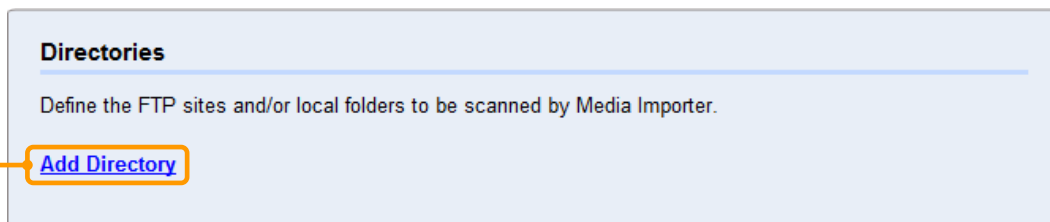
AMAI scans the specified directory for new files to be imported, converting them within this folder if necessary, appending the filename with an **_IMPORTING** tag during the conversion process. After a file has been converted and imported, it is removed from the folder to prevent duplicate processing.

You will save your finished Audition projects to this directory, so make sure it is easily accessible from both the Audition computer and your Central Server. Make sure user permissions to the directory are set so that the directory can be accessed without having to enter a username and password.

Scan directories should already exist—AMAI will not automatically create directories as they are configured. Relative UNC paths specifying `\\hostname\share\folder` are recommended although absolute paths specifying a drive letter and folder can be used.

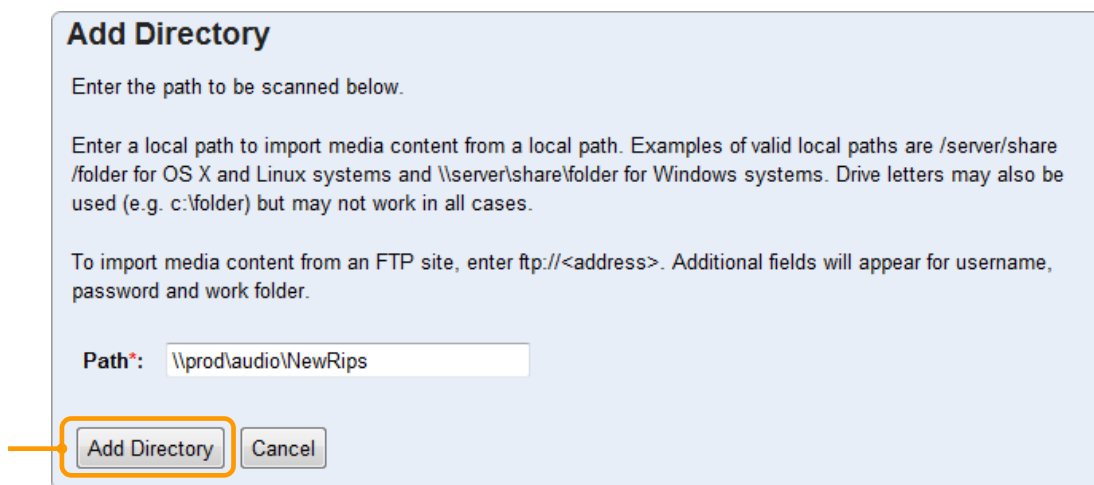
1

Click the **Add Directory** link under **Directories** on the Central Server Configuration Web UI page.



2

Type the **path** to the scan directory in the **Path** field and **click Add Directory**. **Relative UNC paths are recommended.**



3

The Central Server Configuration web page will be updated to show the configured scan directory.

Directories

Define the FTP sites and/or local folders to be scanned by Media Importer.

[Add Directory](#)

Path
\\prod\audio\NewRips ✖

Creating Import Rules

[Rules](#) determine how AMAI processes files dropped in configured scan directories.

After you have created your Rules, don't forget to assign the rules to your configured scan directories!

1

Click the **Add Rule** link under [Rules](#) on the Central Server Configuration Web UI.

Rules

Once a file is imported by Media Importer, it is processed according to rules defined here.

[Add Rule](#)

No rules have been configured on this server.

2

Enter the attributes for this rule.

Save Rule

Rule Name*:

If

Save to category: Asset number:

Set title to:

Set artist to:

Set start date to: Set end date to:

Set cue in to: (seconds) Set eom to: (seconds)

Convert sample rate to:

Convert compression to:

Send to:

Set Dub Confirmed state in WO Traffic on successful import.

Attribute	Description
Rule Name	All rules must have a Rule Name. Type a descriptive name based on the type of Media Asset to be imported. In this case, perhaps <i>Audition Import</i> .
If:	To import files created in Adobe Audition, use the drop-down options to set the first field to File Name and the next field to Is valid Media Asset number . This tells AMAI to import and process all files named with the format of CAT#### (where CAT represents the category and #### represents the four-character media asset ID).
Save to category:	Option disabled when If : File Name : Is valid Media Asset number is selected. Category assignments are included in the file name of the file being imported, so it is not necessary to specify a destination category in AMAI.
Set title to:	Option disabled when If : File Name : Is valid Media Asset number is selected. Title metadata is set in Audition, so it is not necessary to specify a default title in AMAI.
Set artist to:	Option disabled when If : File Name : Is valid Media Asset number is selected. Artist metadata is set in Audition, so it is not necessary to specify a default artist in AMAI.
Set start date to:	Option disabled when If : File Name : Is valid Media Asset number is selected. A start date is set in Audition, so it is not necessary to specify this field in AMAI.
Set end date to:	Option disabled when If : File Name : Is valid Media Asset number is selected. An end date is set in Audition, so it is not necessary to specify this field in AMAI.

Set cue in to:	Option disabled when If : File Name : Is valid Media Asset number is selected. Tones are set in Audition, so it is not necessary to specify a default cue-in in AMAI.
Set EOM to:	Option disabled when If : File Name : Is valid Media Asset number is selected. Tones are set in Audition, so it is not necessary to specify a default EOM in AMAI.
Convert sample rate to:	Option disabled when If : File Name : Is valid Media Asset number is selected.
Convert compression to:	Option disabled when If : File Name : Is valid Media Asset number is selected.
Send to:	Do not select any stations in this box. Distribution should be specified by category in the Central Server Category configuration section.
Set Dub Confirmed state in WO Traffic on successful import	With this option checked, when a spot is imported via AMAI the associated Material will be changed to Dub Confirmed in <i>WO Traffic</i> . This option only applies when using the full API integration between <i>WO Traffic</i> and <i>WO Automation for Radio</i>.

3

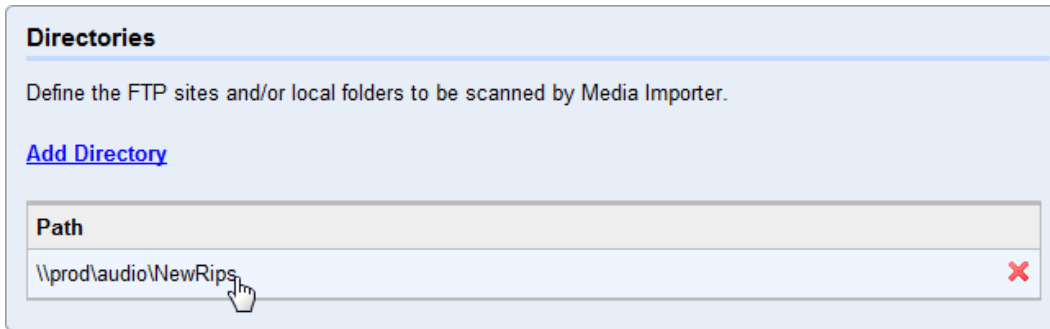
Once all attributes have been set, *click* **Save Rule**.

Assigning the Rule to the Scan Directory

The final configuration step is to apply your rules to your scan directories.

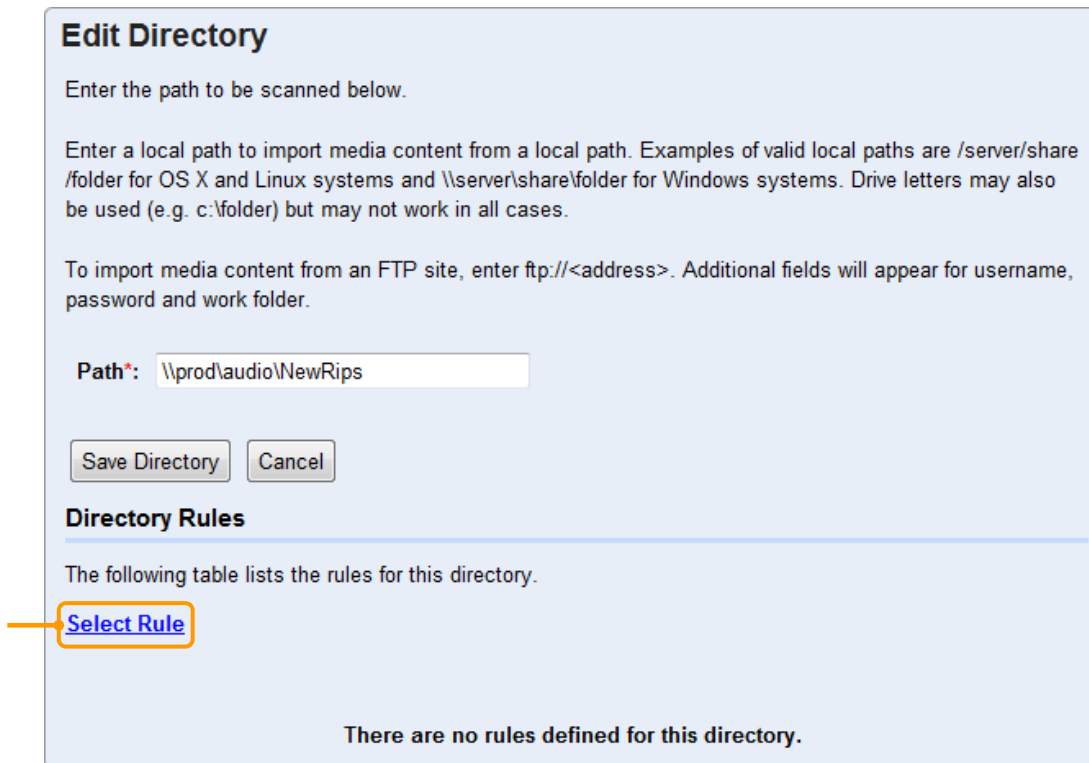
1

Click on a configured **directory** from the main AMAI page.



2

Click the **Select Rule** link.



3

You will see a list of all created rules. Apply all of the rules that apply to this directory and by *clicking* the **checkbox** next to the desired rule.

Select Rule

Please select rules to apply to the directory C:\IMPORT

	Name
<input type="checkbox"/>	Import
<input type="checkbox"/>	Audition Import

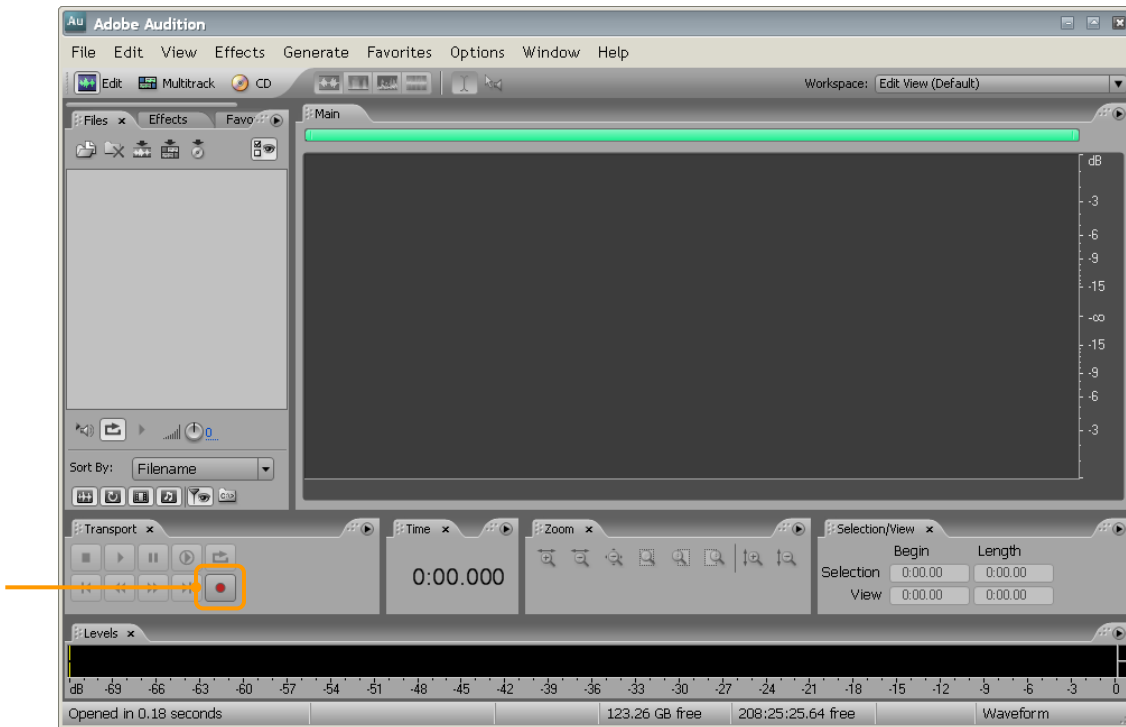
4

Click **Save Selected Rules** to save your changes and return to the Edit Directory screen.

Recording and Saving Audio with Adobe Audition 3

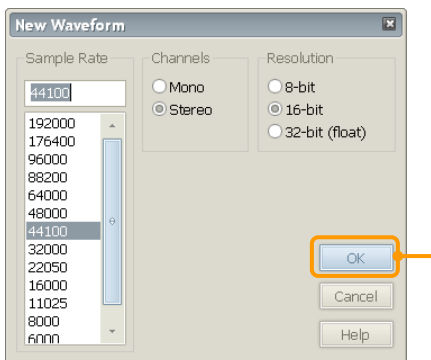
1

Open Audition in **Edit** mode. *Click* the red **Record** button to begin recording.



2

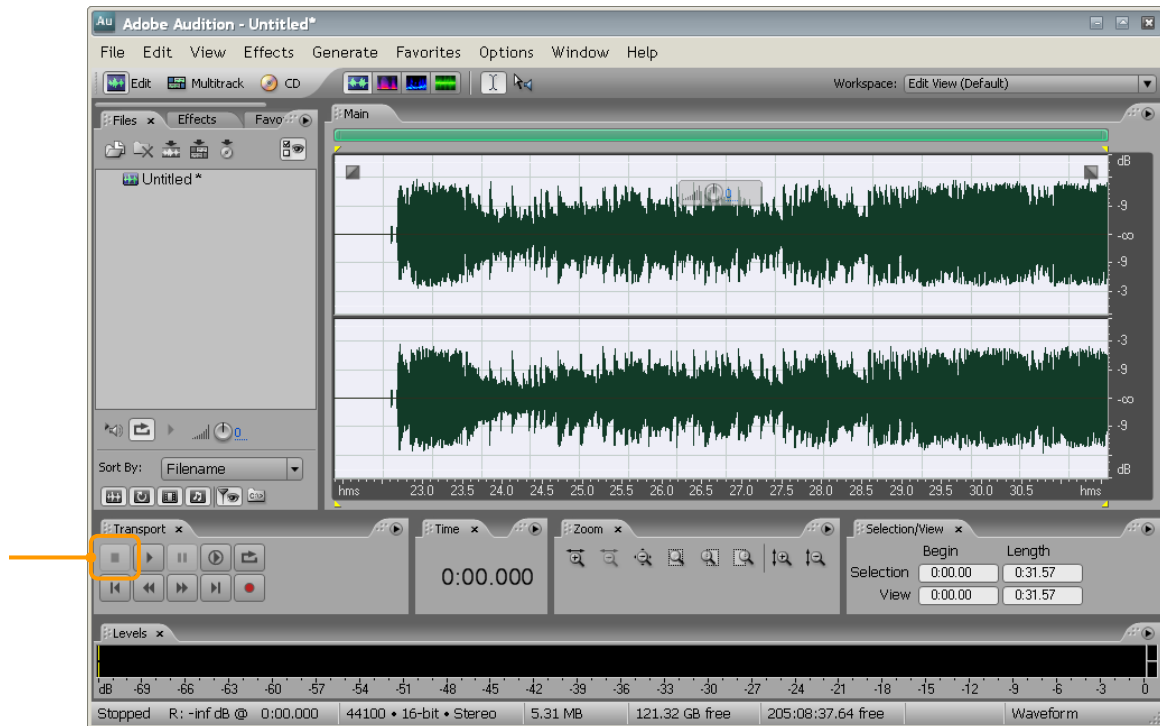
Select the **properties** for this recording—**Sample Rate**, **Channels** and **Resolution**. Once your options have been selected, *click* **OK** to begin recording.



Many stations have a station-wide standard for these settings. If you have questions about what options to select, ask your Production Director or *WO Automation for Radio* system administrator.

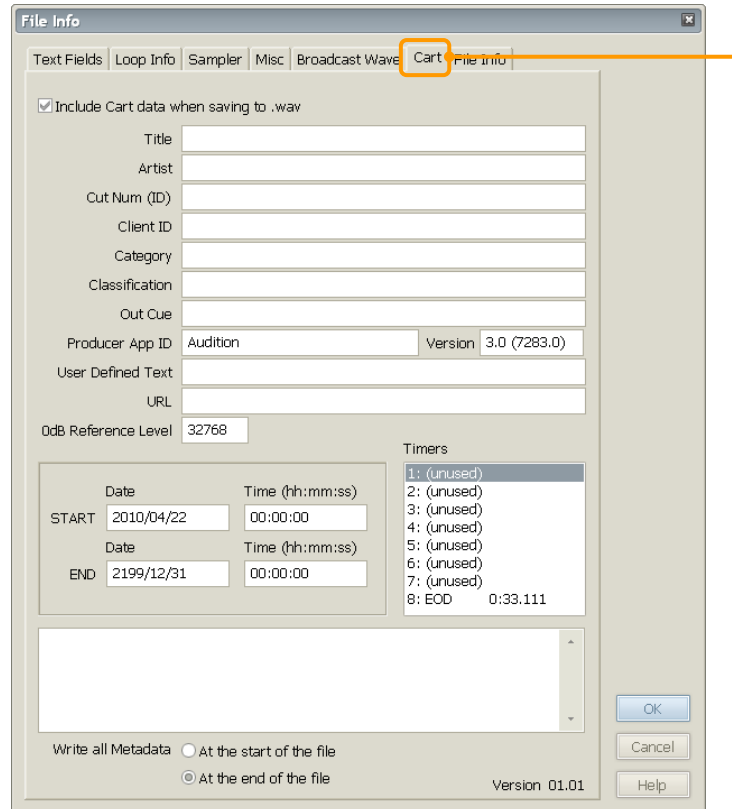
3

When you are done recording, click the **Stop** button in the **Transport** group.



4

Perform any necessary edits on the audio (*consult your Audition documentation or training resources for additional details*). Once your edits are complete, *type* in your **metadata**. Press **CTRL+P** to open the **File Info** dialog. Click on the **Cart** tab and complete the fields.



Field	Description
Title	Type in the title to be displayed in <i>WO Automation for Radio</i> .
Artist	Type in the artist to be displayed in <i>WO Automation for Radio</i> .
Cut Num (ID)	Type in the four-digit <i>WO Automation for Radio</i> Media Asset number . This will be used to automatically generate the filename for this audio file.
Client ID	Not used with <i>WO Automation for Radio</i>
Category	Type in the three-character <i>WO Automation for Radio</i> Category code. This will be used to automatically generate the filename for this audio file.
Classification	Not used with <i>WO Automation for Radio</i>
Out Cue	Type in the Note /Trivia text to be displayed in <i>WO Automation for Radio</i> .
User Defined Text	Type in the Outcue description to be displayed in <i>WO Automation for Radio</i> . <i>Optionally</i> , Release Year can be included if separated using a pipe character. For example: Cold 1998 or F 2003.

URL	Not used with <i>WO Automation for Radio</i>
Start Date	Type in the Start Date to be displayed in <i>WO Automation for Radio</i> and used for in-date/out-of-date processing. This field will default to today's date if left blank. Use the format YYYY/MM/DD.
Start Hour	Type in the Start Hour to be displayed in <i>WO Automation for Radio</i> and used for in-date/out-of-date processing. This will default to 00:00:00 if left blank. Use the format HH:MM:SS in 24-hour time.
End Date	Type in the End Date to be displayed in <i>WO Automation for Radio</i> and used for in-date/out-of-date processing. This will default to 2199/12/31 if left blank. Use the format YYYY/MM/DD.
End Hour	Type in the End Hour to be displayed in <i>WO Automation for Radio</i> and used for in-date/out-of-date processing. This will default to 00:00:00 if left blank. Use the format HH:MM:SS in 24-hour time.

The process used to enter metadata in the File Info window is the same for single recorded files, ripped CD tracks or multi-track session mixdowns.

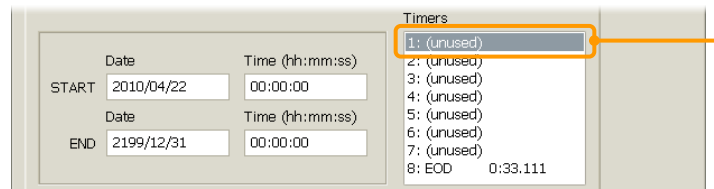
5

Create your timers. We will position the timers in the audio waveform in the next step.

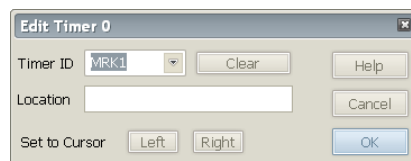
Cue-in (MRK1)

The Cue-in timer is generally not necessary with Adobe Audition. Simply use Audition to edit away any leading silence on your track. However, if you have a special case where the Cue-In is needed here are the steps.

Double-click the **first** unused timer in the Timers group.

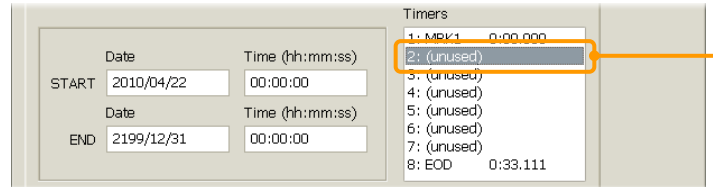


Select **MRK1** from the Timer ID drop-down box on the **Edit Timer 0** window and click **OK**.

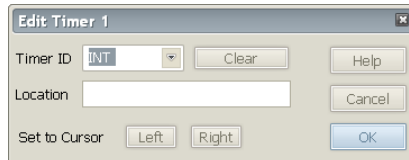


Intro (INT)

Double-click the **second** unused timer in the Timers group.

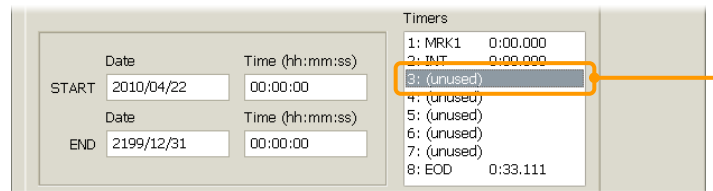


Select **INT** from the Timer ID drop-down box on the [Edit Timer 1](#) window and click **OK**.

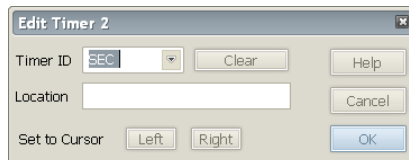


EOM (SEC)

Double-click the **third** unused timer in the Timers group.



Select **SEC** from the Timer ID drop-down box on the [Edit Timer 2](#) window and click **OK**.

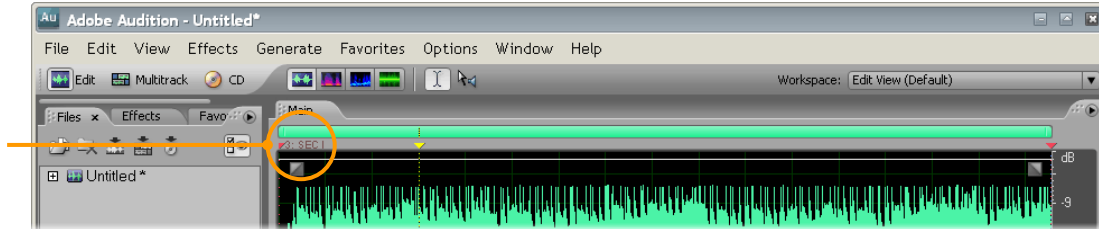


6

After all the timers have been created, click **OK** on the [File Info](#) window to save your changes and close the window.

7

Now that your timers are created it is time to put them where you want them to go. All of your timers will appear at the very beginning of the audio file. They will all be on top of each other like this:



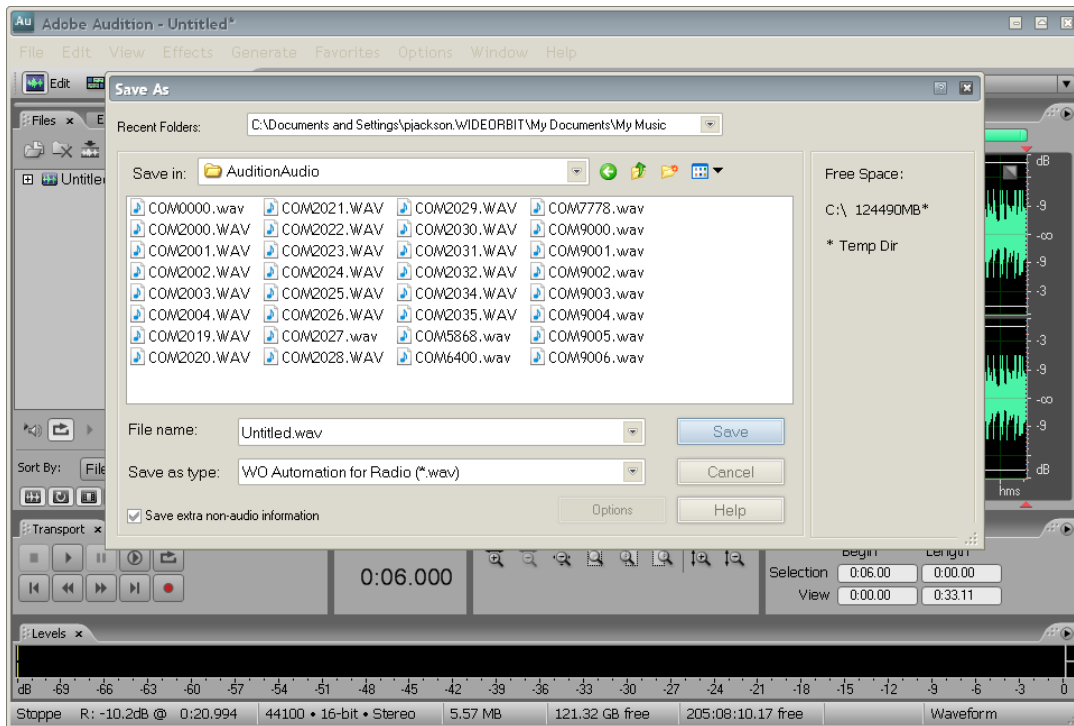
Click on each **timer** and *drag* it to the desired location in the audio.

- Set the **Cue-In** (if you created one) by dragging the **MRK1** marker to the beginning of the audio.
- Set the **Intro** by dragging the **INT** marker to the beginning of the vocal.
- Set the **EOM** by dragging the **SEC** marker to the desired point near the end of the file.

8

Review your work. Press **CTRL+P** to open the **File Info** window. Each timer should appear in the list and the values should match the position of the timers in the waveform. Once your timers and metadata have been verified, click **OK** on the **File Info** window to save your changes and close the **File Info** dialog.

Save your audio file. On the Adobe Audition menu, select **File > Save As...**



- Save the file in the local Scan Directory you configured in AMAI.
- Verify the **Save as type:** entry is **WO Automation for Radio (*.wav)**.
- If you entered a **WO Automation for Radio Category** and **Media Asset number** in the Category and Cut Num (ID) fields on the **File Info** metadata window, you can simply save the file. The **WO Automation for Radio** Audition Plug-in will automatically create a file name of **CCCN.NNN.WAV** based on those two Audition fields.

When saving the file, the plug-in will auto-generate the filename based on the Category and Cut Num (ID) values entered in Audition regardless of the file name displayed in the Audition SAVE AS screen.

This allows you to save using whatever name is supplied by the SAVE AS dialog— **Untitled.wav** for example—the plug-in will automatically apply the **CCCN.NNN.WAV** name based on the entered metadata.

If you did not enter the Category and Cut Num (ID) in the File Info window, you will need to manually supply the correct SAVE AS file name.

Basic Troubleshooting

If the files from Adobe Audition are not being imported, please verify the following items before contacting customer support or your reseller.

- Verify the plug-in was installed in the Adobe Audition installation directory.
- Verify the AMAI directory assigned to the import rule exists and is accessible (check the sharing and security).
- Verify the import rule was indeed assigned to an existing directory.
- Double-check the file name you are using when saving from Adobe Audition. It must be in the specified format: CCCNNNN.WAV
- Verify you are saving the file to the same import directory assigned to the import rule.

Part of what makes *WO Automation for Radio* the best system on the market is the feedback and input of innovative users like you. If you have comments on this document, would like to suggest improvements, or have ideas for future documents, please email rasdocuments@wideorbit.com.

Did you know WideOrbit also makes an industry-leading Traffic solution? Your traffic department deserves the same reliability from the same company that is known for outstanding value and excellent customer support. For more details, contact sales@wideorbit.com.